



UNITED ENGINEERING CONSULTANTS, INC.

- Building Condition Surveys
- Contract Administration
- Corrosion Control Design
- Structural Inspection & Design
- Project Planning & Management

FIELD OBSERVATION REPORT PERMIT # BLDC-00620-2022

		Report No. 83	Page 1 of 2
Project:	Oceans West One Condominium	Inspection For:	Building Repair and WP Project
Day/Date:	Wednesday, August 16, 2023	Job No.	20-1153
Location:	1 Oceans West Blvd. DBS, FL 32118	Engineer:	Christopher B. Longman, P.E.
Contractor:	SPEC Contractor Services	Project Foreman:	Alberto
Subcontractor:	None	Inspector:	Andrew Holland
Weather:	85 Degrees @ 9:55 A.M.	Sunny	Light Breeze 0% Chance of Rain
Workforce Total:	5		
Activities:	Post tensioned cable stressing pool deck slab		

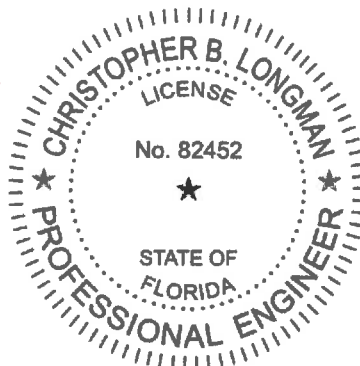
Observation Report:

The Contractor has replaced cables 10-13 within the banded set at column line 9A on the pool deck and replaced add cables #6 and 7. The cables were stressed at the anchor points at the West end slab edge and the tube-ups on the West end of the pool deck (see photos 1 and 2). The banded set cables 10-13 has new cable installed and were attached to the existing cable with a coupler at the very East end of the run. The add cables were replaced in full.

UEC was on-site to oversee the stressing. It was verified that the calibration documents were up to date and coincided with the gauge and ram utilized today. The stressing pressures and elongation were recorded for each cable. The cable elongation for each cable stressed was witnessed and was accepted. Each cable was stressed to 5200 gauge pressure which equates to approximately 29.5 Kips.

UNITED ENGINEERING CONSULTANTS

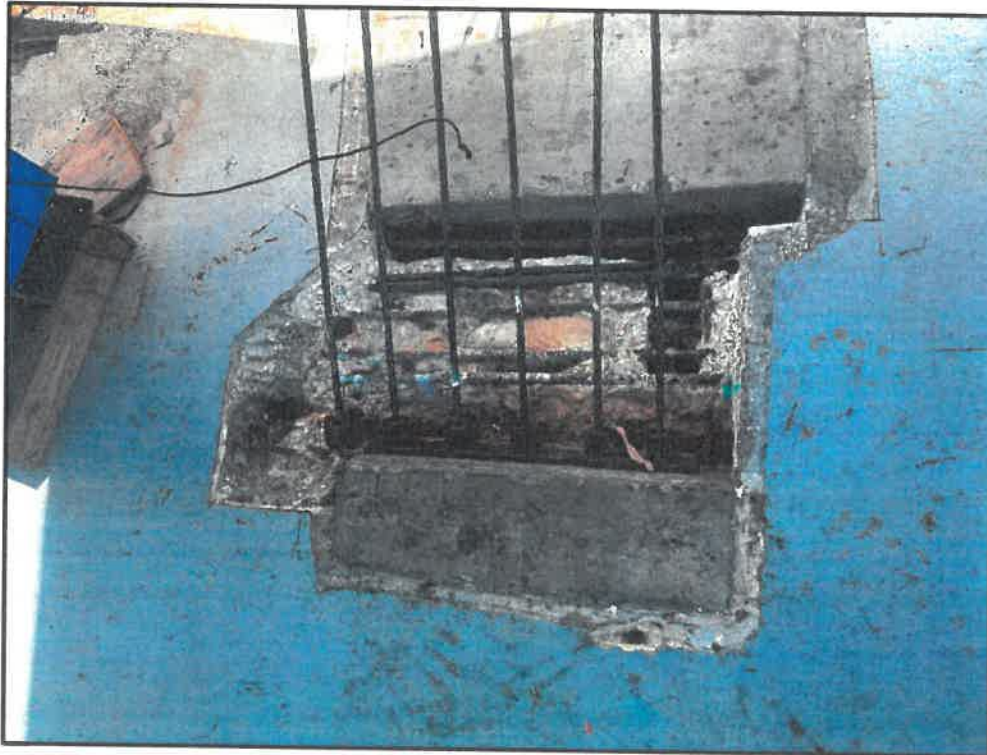
Christopher B. Longman, P.E.
Florida License No. 82452



Christopher
Longman

Digitally signed by
Christopher Longman
Date: 2023.08.17
18:30:14 -04'00'

This item has been electronically signed and sealed by Christopher B. Longman using a digital signature and date. Printed copies of this document are not considered signed and sealed and the SHA authentication code must be verified on any electronic copies.



Photograph #1: Cables 7,11, 12 and 13 stressed at tube ups



Photograph #2: Add cable 6 and banded cable 10 stressed at West end slab edge